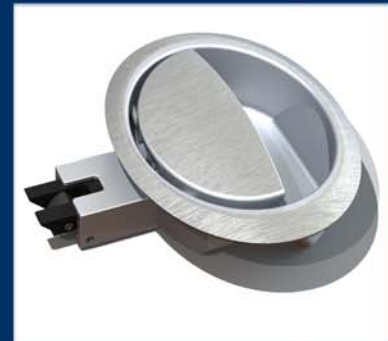


ADJUSTABLE WIRE STRIKES

- Adjustable wire and bumper stops - significantly reduce installation time and allows for future realignment if needed
- Multiple configurations readily available
- Compliment a variety of shapes and sizes of latches
- Low profile models available
- Mounting orientation can be top or bottom
- Customizable wire designs are available
- Single or double bolt requirements covered



40 Years of Engineered Hardware Experience

Contact us for Custom Applications

For Product Information Call (951) 371-0885

Visit our website at www.actronmfginc.com

1841 Railroad Street
Corona, CA 92880



Made in USA

Actron Adjustable Wire Strikes

All items available in clear or black anodized finish.

Wire load rating 300 lbs.

	Wire Adjustability Range	Bumper Adjustability Range	Features
	.250-.500 .375-.625	N/A N/A	Precision adjustability and high load capacity
	.250-.500 .500-.750 .500-1.00	.050-.250 .050-.250 .050-.250	Door bumpers to prevent fascia damage
	.250-1.25 .675-1.25	.050-.500 .050-.500	Low profile door bumpers to prevent fascia damage
	.250-.500 .375-.625	N/A N/A	Dual adjustable wires for double bolt latches
	.500-1.00	N/A	Low profile with spring loaded door pushers



A32103



A32104



A32106



A32107



A32111